



Rethinking our packaging to reduce our environmental footprint

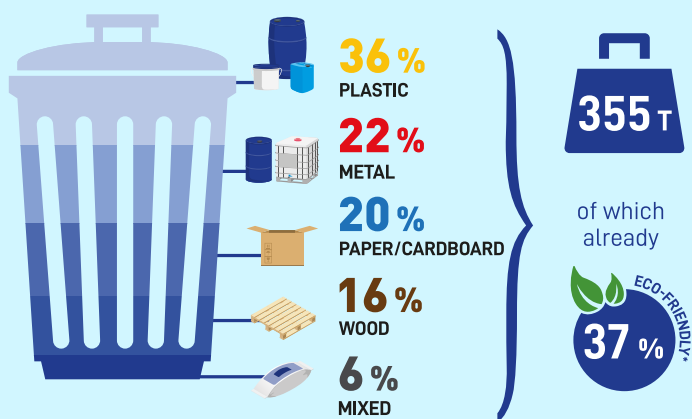
Nowadays, packaging is an issue of great concern for businesses and consumers. Above all, our society questions its ecological impact.

Faced with these challenges, we took stock of our packaging consumption in the SOCOMORE factories in Cork (Ireland) and Elven (France) in order to improve our action plan and thus reduce our environmental impact. This is a commitment we have made not only to our customers, but also to the planet. It means that we are committed to more responsible and sustainable growth.

OUR OBSERVATION

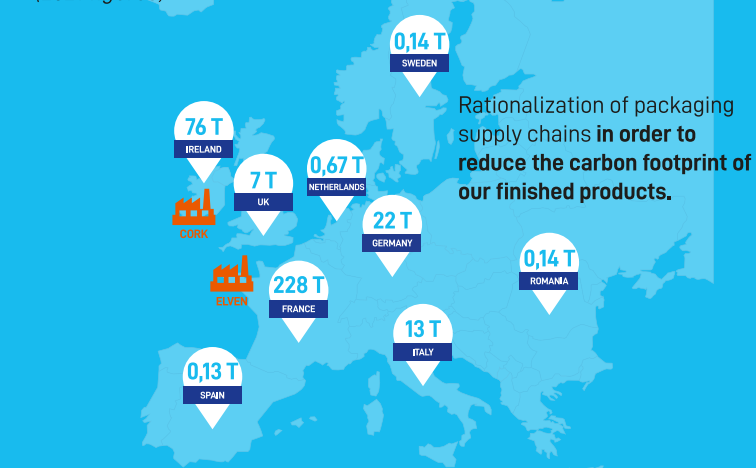
Breakdown of the weight

of packaging shipped in one year (2021 figures)



* Packaging that is recyclable, reusable, reduced-plastic or made from renewable resources.

98.1% of the packaging we use is sourced in Europe by our factories in Cork (IE) and Elven (FR) (2021 figures)



ACTIONS ALREADY TAKEN

100% of cardboard is from responsible and/or recycled sources



FSC forest certification

► Sustainably sourced wood fibers guaranteed



Min. 50%

recycled material

Switch to pallets of the right quality



Less weight in our pallet stock



FSC and/or PEFC certified wood, guaranteeing the sustainable management of French forests

► We combat deforestation in our country, but also in the world, by not participating in the importation of exotic foreign wood.

Introduction of refillable and reusable packaging



Use of reusable and refillable canister and bucket (jumbo) with wipes sold in bags

We favour short circuits with **100% local pallets**



4 areas for improvement on which we are already working: **use of eco-designed, bio-based or recycled, reusable or recyclable packaging.**

Extraction of raw materials

Transition from a fossil resource to a **renewable resource** for the raw material of our packaging.



Use of materials - Packaging production

Weight reduction of our packaging by switching to **flexible packaging** for liquid products (e.g. bag-in-a-box instead of a jerrycan).

► *Materials reduced from a few hundred kilos to several tonnes.*



End of life

Reclamation of packaging for:

- recycling
► *cardboard boxes, glassine labels*
- reuse in short supply chains, for our key accounts
► *IBCs, pallets*
- work on single-material films for recycling

Transport

Reduction of the ecological footprint by favouring **short circuits** with European suppliers and placing orders in full pallets



Usage

- Choice of **combined packaging** whose parts are easily separable to **facilitate sorting and recycling** of packaging at the end user's premises (e.g. bag-in-box)
- Choice of packaging allowing a **reduction in waste** (e.g. presaturated wipes + reusable canister)

- Long-term project
- Short-term project

In accordance with its strategy, SOCOMORE continues to actively improve the impact of its activities on the environment through its formulation, operational process and client application methodologies. Our objective is to continue this undertaking by sustaining the progress already made and by making a number of ideas a reality over the next four years, integrating the environmental dimension entirely in our future projects.

